

## Table of Contents

Table of Contents	1
Computing the work function of a metal surface using ghost atoms	2
Why use ghost atoms?	2
Setting up the geometry	2
Defining the parameters of the calculation	5
Calculation and analysis	8
Comments	10

[Try it!](#)[QuantumATK](#)[Contact](#)[Docs](#) » [Tutorials](#) » [Materials, surfaces and chemistry](#) »

Computing the work function of a metal surface using ghost atoms

## Computing the work function of a metal surface using ghost atoms

Version: 2017

### Downloads & Links



PDF

[Introduction to QuantumATK](#)  
[ATK Reference Manual](#)

In this tutorial you will learn how to compute the work function of a metallic surface using **ATK**. You will create a slab model of Ag (100) surface, use ghost atoms to improve the description of its electronic properties, and use the appropriate boundary conditions to describe correctly the presence of vacuum above it. It is assumed that you have some experience with **ATK**.




### Why use ghost atoms?

Work function calculations depend critically on accurately simulating the decay of the surface charge density into vacuum, but short-ranged localized basis sets are sometimes not adequate for this. In this case, extra LCAO basis functions are positioned above the surface – these are called ghost atoms.

### Setting up the geometry

In this section, you will set up a slab model of Ag(100) surface with ghost atoms, and calculate the work function of the surface.

1. Open **Builder** (icon ). Click Add ► Add From Database, find “*silver*,” and add it to **Stash**.
2. Open Builders ► Surface (Cleave)... Use **Surface (Cleave)** widget to define the surface by cleaving the bulk silver normal to the [100] direction.

Surface (Cleave)

### Define the surface

Miller indices

h k l

1 0 0

Select an atom for the outer layer

	Element	a	b	c
0	Silver	0.000	0.000	0.000
1	Silver	0.500	0.500	0.000
2	Silver	0.500	0.000	0.500
3	Silver	0.000	0.500	0.500

< Back   Next >   Cancel

- Click "Next" twice. On the final page of the **Surface (Cleave)** widget, set the out-of-plane cell vector  $v_3$  to be "Non-periodic and normal." Set the rest of the parameters as follows:
  - Top vacuum = 20 Å. This large vacuum above the surface ensures that the effective potential has enough space to decay to the vacuum level.
  - Thickness = 14 layers.
  - Bottom vacuum = 5 Å. This vacuum ensures that no basis functions extend to the bottom edge of the cell (the radius of the basis functions for default silver is 3.7 Å).

Surface (Cleave)

### Finalize output configuration

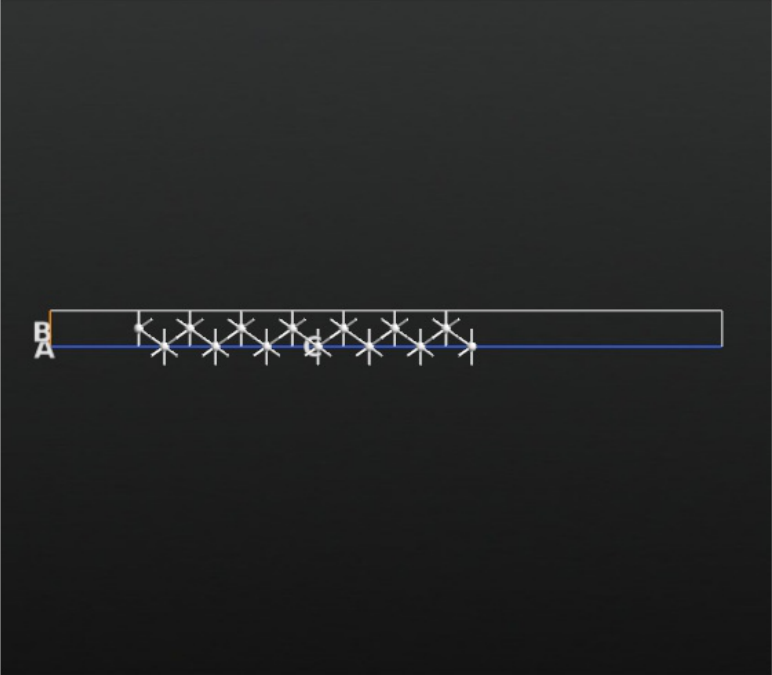
Automatically update 3D view

Out-of-plane cell vector  $\mathbf{v}_3$  is

Non-periodic and normal (slab)

	Layers	Å
Top vacuum	9.7902	20.0000
Thickness	14.0000	28.5999
Bottom vacuum	2.4476	5.0000

Update





< Back Finish Cancel

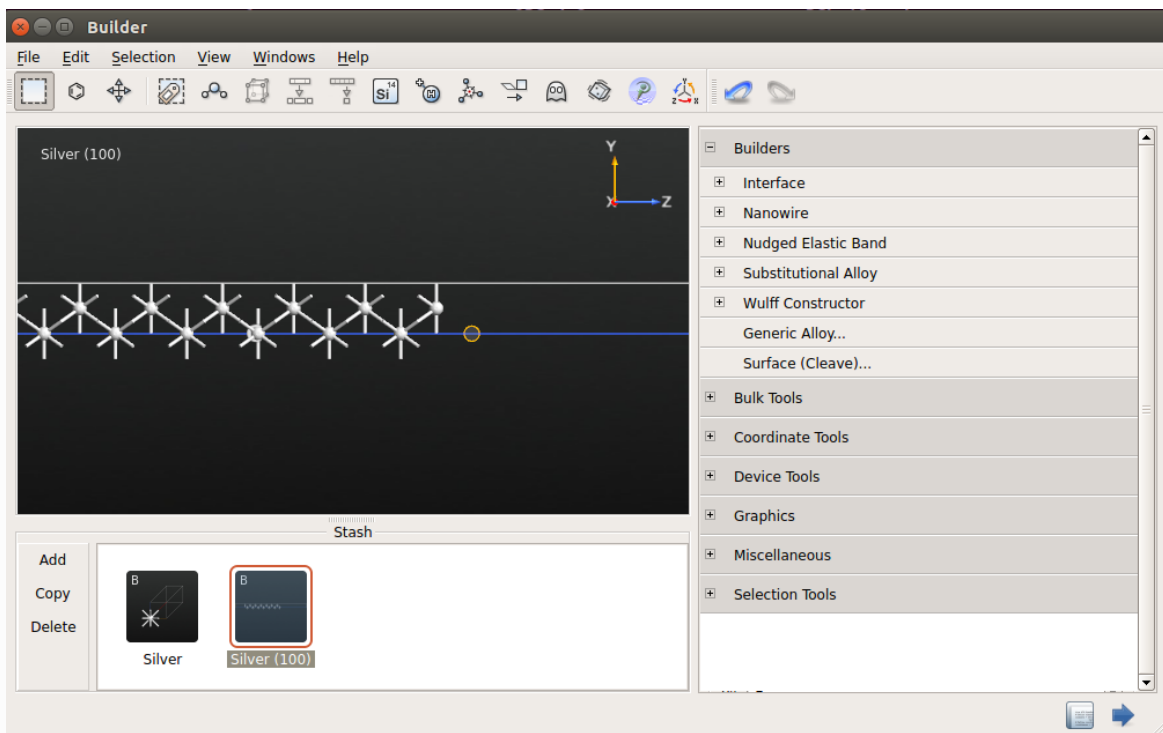
#### Attention

This parameter setting ensures the convergence of work function.

#### Warning

In the direction normal to the surface, the non-periodicity of the system requires appropriate boundary conditions.

4. Click *Finish*. The surface structure will now appear in **Stash**.
5. To finalize the geometry setup, select the atom with the largest Z coordinate in **Builder** and turn it into a ghost atom by clicking the icon .
6. As a result, the slab consists of 13 layers. The role of the ghost atom on the surface is to describe the smooth decay of electron density in the vacuum.
7. Send the structure to **Script Generator** (icon .



### Note

Changing an atom into a ghost atom means setting its potential, e.g., pseudopotential or nuclear charge there, to be zero. The basis functions are, however, still deployed there to describe the electron density. An alternative is to extend the range of the basis functions at every atomic position, although it makes the calculation expensive if the system is not as simple as in this example.

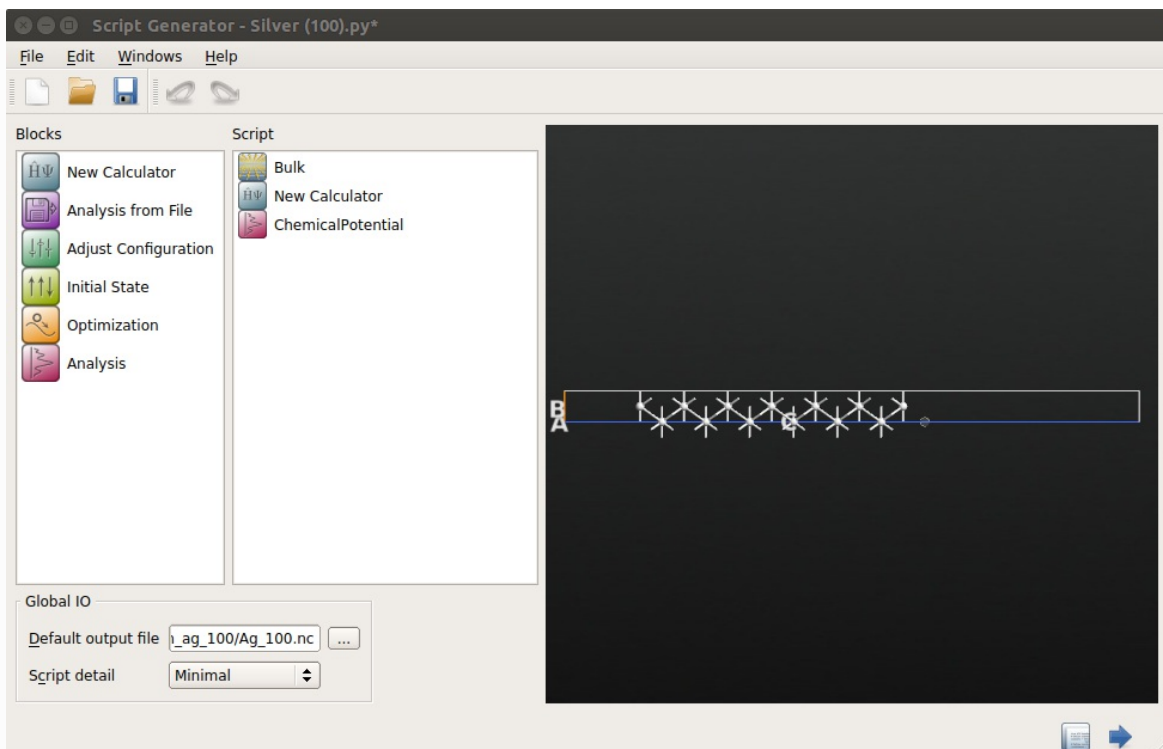
## Defining the parameters of the calculation

1. In **Script Generator**, insert a **New Calculator** by double-clicking it in **Blocks** panel. Also, click **Analysis** ▶ **ChemicalPotential** to compute the chemical potential of the slab.

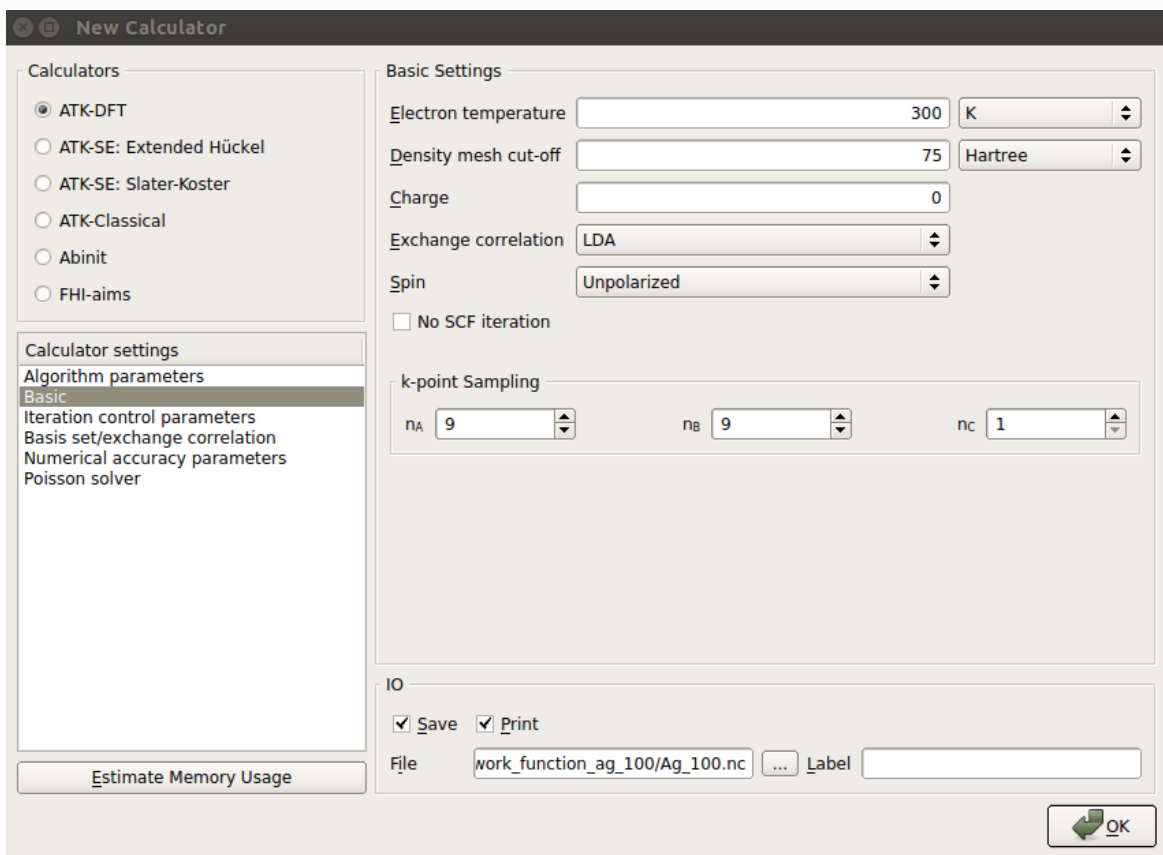
### Note

Imposing appropriate boundary conditions at the top and bottom of the slab as shown below makes the chemical potential equal to the work function.

2. Set a suitable file name for the HDF5 file, e.g., "*Ag\_100.hdf5*".



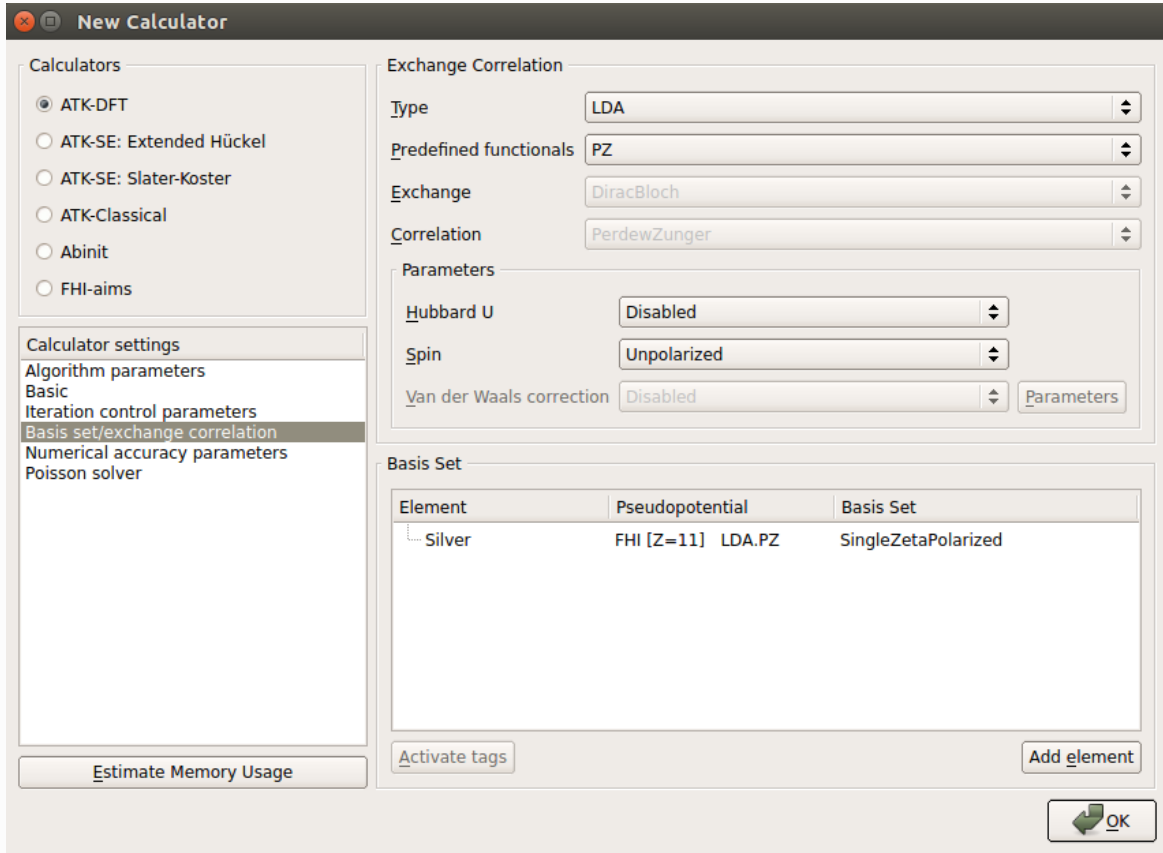
3. Double-click the **New Calculator** in **Script** panel and set the following parameters:
  - For accurate description of the electronic structure, set the k-point sampling to be 9x9x1 in *Basic* section of **Calculator settings**



#### Note

Remember in general to check the convergence of the properties of interest with respect to the fineness of the k-point grid.

- In *Basis sets/Exchange correlation* section, select “*SingleZetaPolarized*” for the basis set.



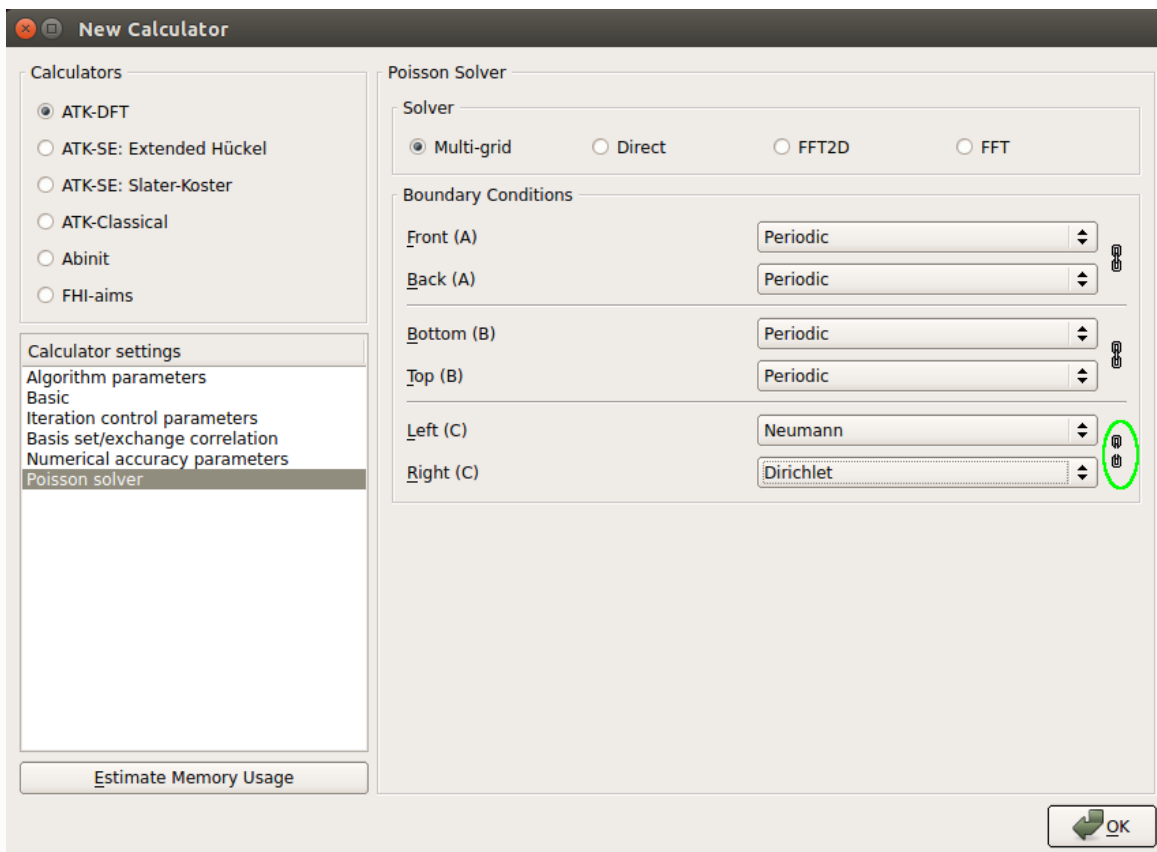
#### Note

Employing this basis set achieves good accuracy for this slab model with moderate computational effort. For other systems, however, it is not ensured that the use of the same basis set always provides enough accuracy.

#### Warning

Generally it is not advisable to use the TB09-MGGA to compute the work function, because the TB09-MGGA potential diverges in the vacuum. For the use of TB09-MGGA, the  $c$ -parameter should be tuned to obtain a reasonable value of the work function, and correct electronic structure of the material. In the present case, setting  $c = 0.94$  gives  $WF = 4.44$  eV, in excellent agreement with the LDA result (see below). Note that the value of  $c$  differs from that calculated self-consistently for bulk Ag,  $c = 1.31$ .


- Finally, the most important setting: in *Poisson solver* section, select the Multi-grid Poisson solver. Then, click “chain” icon (marked in green in the picture below) to unlink the settings of the Left and Right cell boundaries, and set the Neumann boundary condition on the Left boundary, and the Dirichlet boundary condition on the Right cell boundary, respectively.



### Note

Dirichlet boundary condition determines the Hartree potential to be zero on the right cell boundary, to mimic the presence of vacuum far away from the surface. Because of non-periodicity in the C direction, Neumann condition is used to demand the gradient of the Hartree potential to vanish on the left of the system.

## Calculation and analysis

1. Send the structure to **Job Manager** and carry out the calculation. After the calculation, inspect the log file by clicking the  button.
2. Around the end of the log file, the chemical potential, or the work function is printed. The value obtained for Ag 100 is 4.45 eV, which lies in the range from 4.22 to 4.81 eV, reported by experiments [1,2].



```

Editor - work_function_ag_100.log
File Edit Windows Help
776 | 7 Ag [ 0.000 , 0.000 , 21.343 ] 11.00006 0.00006
777 | 8 Ag [ 1.445 , 1.445 , 23.386 ] 10.99992 -0.00008
778 | 9 Ag [ 0.000 , 0.000 , 25.428 ] 11.00082 0.00082
779 | 10 Ag [ 1.445 , 1.445 , 27.471 ] 11.00153 0.00153
780 | 11 Ag [ 0.000 , 0.000 , 29.514 ] 10.98497 -0.01503
781 | 12 Ag [ 1.445 , 1.445 , 31.557 ] 10.93495 -0.06505
782 | 13 [Ag] [ 0.000 , 0.000 , 33.600 ] 0.07787 0.07787
783 | -----
784 | 27 E = -46.8162 dE = 3.678850e-05 dH = 1.385508e-05
785 | -----
786 | Calculation Converged in 27 steps
787 | -----
788 | Fermi Level = -4.454779 eV
789 | -----
790 | -----
791 | -----
792 | DFT Calculation [Finished Wed Oct 14 13:41:30 2015]
793 | -----
794 | -----
795 | -----
796 | Chemical Potential : -4.454779 eV
797 | -----
798 | -----

```

3. Just to demonstrate that with ATK it is also possible to get accurate results for other metals, see the comparisons with experiments in the table below:

Table 4 Comparison between measured and calculated Work Functions (WFs) for different metal surfaces. [\[1\]](#)

Surface	Measured WF (eV)	WF calculated using the LDA <sup>[1]</sup> (eV)
Ag (100)	4.64	4.45
Ag (110)	4.52	4.17 <sup>[2]</sup>
Ag (111)	4.74	4.71
Al (100)	4.41	4.42
Au (100)	5.28	5.38 <sup>[3]</sup>
Ca (100)	2.87	2.85
Cu (100)	4.53-5.10	4.92
Li (100)	2.93	3.14
Nb (100)	3.95-4.87	3.95
Pb (100)	4.25	3.95
Pt (100)	5.12-5.93	5.97
Tl (100)	3.84	3.74
W (100)	4.32-5.22	4.01

[1] All calculations were performed using a DoubleZetaPolarized basis set and a grid of 9x9x1 k-points. The rest of the parameters were set as in the example above. Note that this means that all values are not necessarily converged in these parameters. The surfaces are also not relaxed.

[2] The Ag(110) surface is known to undergo reconstruction; the computed value shown here does not take that into account.

[3] Fortuitously, the calculated work function for gold with SingleZetaPolarized is 5.28 eV.

## Comments

- Above we have commented in a few places on the importance of carefully checking convergence in certain numerical as well as geometrical parameters. The work function is quite sensitive to all of them, and so, for convenience, let us summarize the most important ones:
  - **Number of slab layers:** for silver, tests show that 13 layers, as we used above, is sufficient, but any smaller number gives different results;
  - **Extension of vacuum on both sides:** 20 Å on the right cell boundary, as used in this example, is on the safe side; at least for Ag(100), even just 10 Å is enough;
  - **K-point sampling:** 9x9x1 gives reasonable results, but as always with k-point sampling the convergence in this parameter is not a simple monotonous function;
  - **Basis set:** for transition metals, polarization orbitals are needed to get correctly shaped atomic functions, and hence we choose *"SingleZetaPolarized"* for silver. However, for other categories of elements other rules may apply. Independently on the element, the *"DoubleZeta"* basis set is a good work horse. *"DoubleZetaPolarized"* is always a safer choice, although it demands a bit more computation time;
  - **Exchange-correlation functional:** "simple" metals are generally well described by LDA, but this is certainly not true for all materials.
- The script can be run in parallel using MPI for a considerable performance benefit, due to the large number of k-points, which is one of the parameters QuantumATK parallelizes well over.
- By comparing the values reported in the table above for the (100), (110) and (111) crystalline faces of Ag, it appears clear that the work function depends on the crystalline face considered.

[← Previous](#)

[Next →](#)